



**H  
Y  
M  
E  
R**

# **HIGHER WITH SAFETY**

Our new products for safe  
and efficient work.

---

# TABLE OF CONTENTS

## LADDERS, STEPS, WORKING PLATFORMS, FALL PROTECTION

- 03 Machine step R13
- 04 Step leaning ladder R13
- 05 Platform ladder R13 with tip and roll wheels and long handrail
- 06 Telescopic leaning ladder
- 07 Step ladder R13, double-sided accessible
- 08 Step ladder R13 with platform, single-sided accessible
- 09 Fall protection
- 11 Multifunctional work platform
- 15 Step-combination ladder, three-section
- 16 Step ladder with retaining bracket
- 17 Machine step

## ACCESSORIES

- 18 Guardrail bracket with clamping lever
- 18 Wall bracket set for ladders
- 18 Safety feet, height adjustable for telescopic leaning ladder
- 19 Holding device lateral for machine step
- 19 Holding device frontal for machine step
- 19 Castors set for machine step

# MACHINE STEP R13

- Work safety in the highest slip resistance class R13. Suitable for use in oily areas.
- Comfortable and safe standing for longer periods of work thanks to the large platform.
- Non-slip, convenient ascent thanks to the large step.
- Extremely high stability for heavy-duty use.
- Lightweight for ergonomic positioning.
- Optionally movable using castors.

## Features:

- **Aluminium perforated plate R13.**
- **Platform dimensions 580 x 350 mm.**
- **Permissible load 150 kg.**
- **According to EN 14183.**



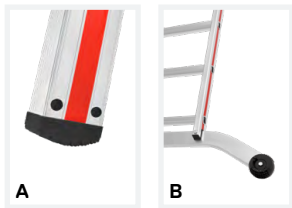
Number of steps incl. platform	1	2	3	4	5
Standing height (approx. m)	0.20	0.40	0.60	0.80	1.00
Reach height (approx. m)	2.20	2.40	2.60	2.80	3.00
Overhang (approx. m)	0.38	0.63	0.87	1.10	1.34
Width (approx. mm)	600	680	700	730	760
Weight (approx. kg)	2.8	5.6	8.2	10.8	14.6
Order no.	6878164	6878264	6878364	6878464	6878564

# STEP LEANING LADDER R13

- Work safety in the highest slip resistance class R13.  
Suitable for use in oily areas.
- Ergonomic working on 80 mm step depth.  
Front step edges flush with stile.
- Very robust thanks to torsion-resistant,  
swaged stile/step connection.
- More ground clearance and stability thanks  
to the arched cross-beam.
- Convenient, ergonomic ladder width.

## Features:

- R13 coating on the entire step surface.
- Inner ladder width 370 mm.
- According to EN 131.



**A** Bolted ladder feet  
**B** Curved cross-beam



Number of steps	8	10	12	14	16
Stile (approx. mm)	71	71	71	71	71
Length (approx. m)	2.22	2.72	3.22	3.72	4.22
Standing height (approx. m)	1.17	1.63	2.09	2.56	3.02
Reach height (approx. m)	3.17	3.63	4.09	4.56	5.02
Width top/bottom (approx. mm)	425/425	425/425	425/961	425/961	425/961
Weight (approx. kg)	6.3	7.7	10.2	11.3	13.3
Ladder bottom	A	A	B	B	B
Order no.	891208	891210	891212	891214	891216

# PLATFORM LADDER R13 WITH TIP AND ROLL WHEELS AND LONG HANDRAIL

- Work safety in the highest slip resistance class R13.  
Suitable for use in oily areas.
- Ergonomic working on 80 mm step depth.  
Front step edges flush with stile.
- Solid aluminium storage tray with bucket hook.
- High-strength perlon straps provide reliable safety strut.
- Detachable, rigid braces prevent accidental folding.
- Ergonomically shaped handrails on both sides.
- Conical design ensures ladder stability.

## Features:

- R13 coating on the entire step surface.
- Platform dimensions 440 x 400 mm.
- Guardrail height above platform 800 mm.
- According to EN 131.



Number of steps incl. platform	4	5	6	7	8	9	10	12
Stile (approx. mm)	71	71	71	71	71	71	71	71
Length (approx. m)	1.95	2.20	2.45	2.70	2.95	3.20	3.45	3.95
Standing height (height to platf.) (approx. m)	0.95	1.15	1.40	1.65	1.85	2.10	2.35	2.80
Reach height (approx. m)	2.95	3.15	3.40	3.65	3.85	4.10	4.35	4.80
Vertical height (approx. m)	1.75	2.00	2.20	2.55	2.70	3.00	3.15	3.60
Width (approx. mm)	650	670	700	730	750	780	800	850
Base width (approx. m)	1.15	1.30	1.45	1.60	1.75	1.90	2.05	2.35
Weight (approx. kg)	11.7	12.9	14.2	16.2	17.6	18.5	19.8	24.5
Safety strut (perlon straps)	-	-	-	-	✓	✓	✓	✓
Order no.	868104	868105	868106	868107	868108	868109	868110	868112

# TELESCOPIC LEANING LADDER

- Ergonomic working on 80 mm step depth.
- Rubber pads protect susceptible surfaces and reduce the risk of slipping.
- Highly stable thanks to foldable, transport-optimised telescopic stabilisers.
- Central unlocking with just one grip.
- Requires little space to transport and store.
- Smooth, safe extension and retraction.
- Convenient, ergonomic ladder width.
- Anodised stiles prevent dirty hands from aluminium abrasion.

**Features:**

- **According to EN 131.**
- **Legal warranty.**



Number of steps	11	13
Length retracted (approx. m)	0.87	0.93
Length extended (approx. m)	3.49	4.09
Standing height (approx. m)	2.49	3.09
Reach height (approx. m)	4.49	5.09
Width top/bottom (approx. mm)	440/550	440/560
Weight (approx. kg)	15.2	17.4
Order no.	801411	801413

# STEP LADDER R13, DOUBLE-SIDED ACCESSIBLE

- Work safety in the highest slip resistance class R13.  
Suitable for use in oily areas.
- Ergonomic working on 80 mm step depth.  
Front step edges flush with stile.
- Torsion-resistant, cast aluminium hinges.
- High-strength perlon straps provide reliable safety strut.

## Features:

- R13 coating on the entire step surface.
- Screw-in ladder feet.
- According to EN 131.



862412

Number of steps	2×3	2×4	2×5	2×6	2×7	2×8	2×9	2×10	2×12
Stile (approx. mm)	71	71	71	71	71	71	71	71	71
Length (approx. m)	0.77	1.04	1.30	1.53	1.80	2.05	2.28	2.54	3.04
Standing height (approx. m)	0.22	0.45	0.69	0.92	1.15	1.38	1.61	1.85	2.31
Reach height (approx. m)	2.22	2.45	2.69	2.92	3.15	3.38	3.61	3.85	4.31
Vertical height (approx. m)	0.70	0.95	1.15	1.40	1.65	1.85	2.10	2.30	2.80
Width top/bottom (approx. mm)	355/430	355/450	355/475	355/500	355/525	355/550	355/575	355/600	355/650
Base width (approx. m)	0.80	0.98	1.15	1.30	1.50	1.70	1.95	2.15	2.50
Weight (approx. kg)	4.8	6.2	7.6	9.1	10.5	12.1	13.6	15.3	18.7
Order no.	862406	862408	862410	862412	862414	862416	862418	862420	862424

# STEP LADDER R13 WITH PLATFORM, SINGLE-SIDED ACCESSIBLE

- Work safety in the highest slip resistance class R13. Suitable for use in oily areas.
- Ergonomic working on 80 mm step depth. Front step edges flush with stile.
- Comfortable and safe standing for longer periods of work thanks to the large platform.
- Solid aluminium storage tray with bucket hook.
- High-strength perlon straps provide reliable safety strut.

## Features:

- R13 coating on the entire step surface.
- Screwed-in ladder feet.
- Platform dimensions 250 x 250 mm.
- According to EN 131.



Number of steps incl. platform	4	5	6	7	8	10	12	14
Stile (approx. mm)	71	71	71	71	71	71	71	71
Length (approx. m)	1.70	1.95	2.20	2.45	2.70	3.20	3.70	4.20
Standing height (height to platf.) (approx. m)	0.93	1.16	1.40	1.63	1.85	2.32	2.78	3.25
Reach height (approx. m)	2.93	3.16	3.40	3.63	3.85	4.32	4.78	5.25
Vertical height (approx. m)	1.55	1.78	2.01	2.25	2.48	2.94	3.40	3.87
Width top/bottom (approx. mm)	305/480	305/500	305/530	305/550	305/570	305/630	305/680	305/740
Base width (approx. m)	0.90	1.05	1.20	1.35	1.50	1.85	2.20	2.55
Weight (approx. kg)	6.3	7.3	8.3	9.5	10.6	13.1	15.3	18.3
Safety strut (perlon straps)	-	-	-	✓	✓	✓	✓	✓
Order no.	862604	862605	862606	862607	862608	862610	862612	862614

# FALL PROTECTION



## Fall arrest rail

- Rail profile with connector, no attachment hardware: 50x30 mm.
- For retrofitting to existing ladders that do not have a fall arrest system.
- Recommended distance between brackets: max. 1,200 mm.

Length (approx. mm)	560	1,120	1,400
Material	steel	steel	steel
Weight (approx. kg)	1.2	2.3	2.9
Order no.	0055472	0055473	0055474

Length (approx. mm)	1,960	2,800	3,640
Material	steel	steel	steel
Weight (approx. kg)	4.0	5.8	7.5
Order no.	0055475	0055476	0055477



## Mounting bracket

- Bracket for mounting the fall arrest rail to existing ladder systems.
- For 30x30 mm rungs.

Material	steel
Weight (approx. kg)	0.2
Order no.	0055478



## Rest platform, foldable

- For attachment to the fall arrest rail.
- Should be installed every 10 metres.

Material	steel
Weight (approx. kg)	4.6
Order no.	0055479



## End stop

- Can be installed at both the top and bottom.
- Prevents the fall arrest device from being inserted incorrectly and from accidentally falling out of the fall arrest rail.

Material	steel
Colour	silver
Weight (approx. kg)	0.4
Order no.	0055481



## End stop, rigid

- Prevents the fall arrest device from being removed from the guide rail.

Material	steel
Colour	silver
Weight (approx. kg)	0.3
Order no.	0055480



## Fall arrest rail connector

- For connecting individual ladders or rail segments.

Size (approx. mm)	60x30
Material	steel
Colour	silver
Weight (approx. kg)	0.6
Order no.	0055483



## Fall arrest slider

- With two redundant fall-arrest systems and speed-dependent fall-arrest function.
- Additional lever allows the slide to be used in lean-back mode when climbing, which reduces the injury caused by a fall.
- For use in conjunction with the fall arrest ring.

Material	alu/steel
Max. number of users	1
Weight (approx. kg)	1.1
Order no.	0055485

**Note:** For rescue purposes, a second fall arrest slider and PPE kit must be available close to the location.

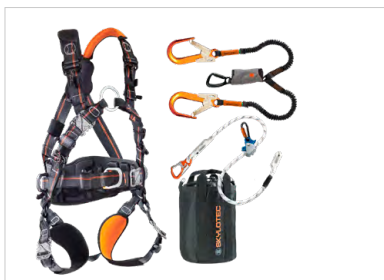


## Removable fall arrest slider

- Can be attached to and removed from any part of a C-profile.
- The dual safety mechanism prevents it from being attached incorrectly and from opening under load.
- Indicator to show device is securely engaged.
- Suitable for both lean-back and pull modes.

Material	alu/steel
Max. number of users	1
Permissible load (kg)	150
Temperature range (approx. °C)	45-30
Weight (approx. kg)	1.6
Order no.	0055486

**Note:** For rescue purposes, a second fall arrest slider and PPE kit must be available close to the location.



## PPE kit

- State-of-the-art harness featuring click buckles, ergonomic padding, side D-rings and an attachment ring for fall protection.
- Shock absorber with tear-away mechanism that can reduce the fall-arrest force to 6 kN for loads of up to 140 kg, thereby staying within limits.
- Incl. practical transport bag.

Size	M / XXL
Weight (approx. kg)	7.1
Order no.	0055484

**Note:** For rescue purposes, a second fall arrest slider and PPE kit must be available close to the location.

## Components:

- IGNITE PROTON WIND STEEL (G-1132-WS-ST-M/XXL)
- SKYSAFE PRO FLEX Y (L-0559-1,8)
- ERGOG RIP SK16 (L-0204-1,5)
- ROPE BAG (ACS-0009-3)



## Stile extension

- For safely exiting the ladder and stepping onto a flat roof.
- No end stop required.
- Exit can be swivelled by 180°.
- The top edge of the roof exit must be at least 1,000 mm above the top edge of the landing.
- The stile reinforcement must extend downwards through at least two mounting brackets.

Material	steel
Weight (approx. kg)	14.2
Order no.	0055482

# MULTIFUNCTIONAL WORK PLATFORM

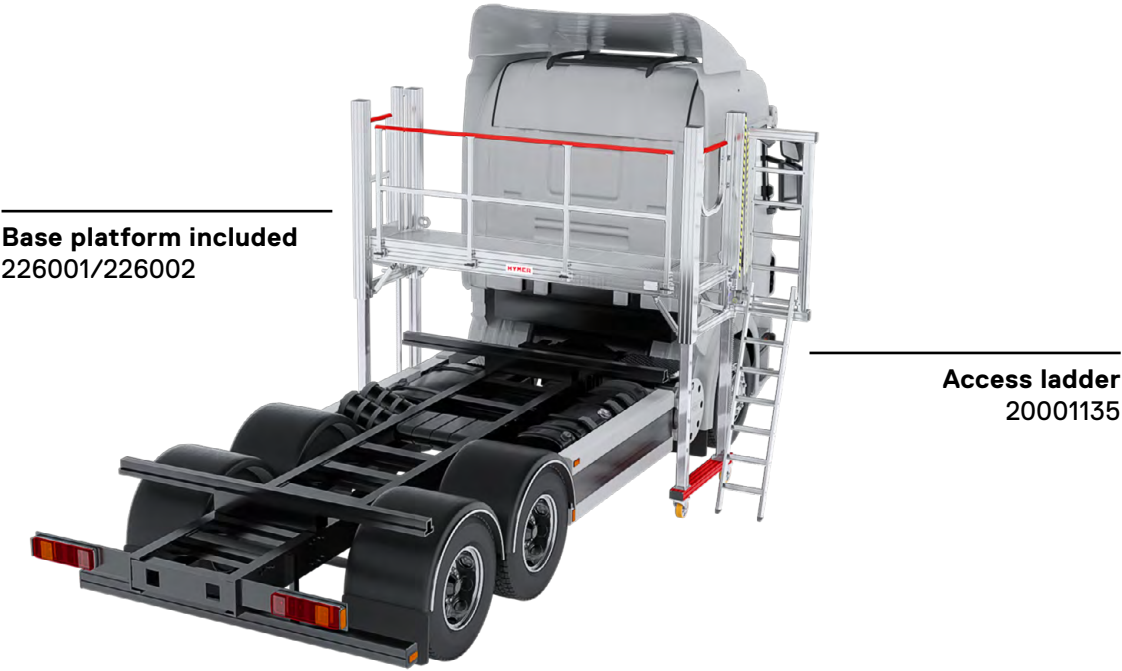
## Versatility to suit any application

Whether it's regular maintenance or urgent repair work – when working on commercial vehicles, machinery or equipment, it is crucial to not only have optimal access but also ensure you can do your tasks with the utmost safety and comfort.

Our new customisable multifunctional work platform, for instance, lets you work on a vehicle's front and rear spoilers, windscreen and rooftop safely, easily and comfortably.

It is also great for situations that require a height-adjustable work platform with a brace-free base.

## Example of use: What your platform could look like



Adjustment method	Height adjustment with locking pins	Height adjustment with crank
Order no.	226001 + 20001135	226002 + 20001135

## Your base platform

### Select the base module.

#### Height adjustment with locking pins

The base module platform featuring locking pins for height adjustment is designed to be a hassle-free option for permanent use. Once adjusted to the desired height, the base platform is exceptionally low maintenance because the mechanism does not require lubrication.

- Great value for money
- Perfect for applications that do not require frequent height adjustment
- Low maintenance



#### Height adjustment with crank

The base module platform featuring a crank for height adjustment can be quickly and effortlessly raised or lowered without a forklift or crane. The convenient crank is easy and smooth to operate, making the platform extremely versatile.

- Continuous adjustment
- Requires little effort
- No electricity needed



## Base platforms

Adjustment method	Height adjustment with locking pins	Height adjustment with crank
Walking surface	grooved aluminium R11	grooved aluminium R11
Platform length (approx. mm)	3,250	3,250
Clear length (approx. mm)	3,000	3,000
Total height min./max. (approx. mm)	2,104/3,304	2,104/3,304
Standing height (approx. mm)	800 – 2,000 (in 100 mm increments)	800 – 2,000 (stepless)
Guardrail height (approx. mm)	1,100	1,100
Cross-beam width (approx. mm)	1,200	1,200
Swivel castors with brakes diameter (approx. mm)	—	160
Step width (approx. mm)	800	800
Total load capacity (approx. kg)	300	300
Step/rung load capacity (approx. kg)	150	150
Own weight (approx. kg)	285	325
Order no.	226001	226002

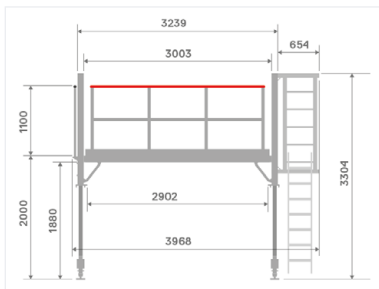
## Your safety platform

### Choose the access type.

#### Access ladder

Practical, multifunctional and space-saving: The hooks allow the access ladder to be attached to the platform in no time. Similarly, the ladder can be removed just as quickly to serve as a means of access elsewhere.

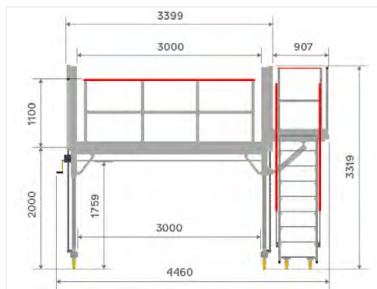
- Great value for money
- Takes up little space
- Can also be used as a single ladder



#### Four-stile access steps

The four-stile access steps without extension can be attached to the platform's short side. It automatically adapts to the platform height and overall offers a high level of comfort and safety. For instance, workers can use the access steps whilst carrying a toolbox.

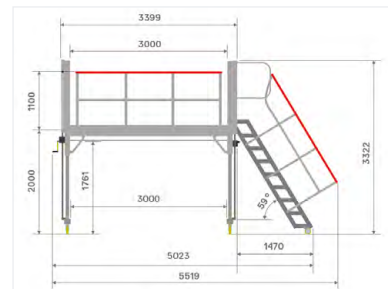
- Angle varies automatically with height (approx. 19° – 59°)
- Comfortable to use thanks to 500 mm step width
- Guardrails on both sides to ensure safe access



#### Four-stile access steps with extension

The four-stile access steps with extension and guardrails can be attached to the platform's short side to form an L-shape. This is in line with the versatile and spacesaving nature of the platform because the overall platform length is reduced by having the access steps at a 90° angle to the platform.

- Angle varies automatically with height (approx. 19° – 59°)
- Comfortable to use thanks to 500 mm step width
- Guardrails on the access steps and extension to ensure safety
- Space-saving due to L-shape configuration



## Access

Type	Access ladder	Four-stile access steps	Four-stile access steps with extension
Positioning	dependent on height (in 280 mm increments)	on the short side	on the short side in L-shape
Length added by the access option retracted/extended (approx. mm)	+ 700	+ 2,540/+ 2,050	+ 950
Width added by the access option retracted/extended length (approx. mm)	—	—	+ 2,360/+ 1,870
Dimensions of extension length x width (approx. mm)	—	—	935 x 680
Ladder inner width (approx. mm)	350	—	—
Step distance (approx. mm)	250	—	—
Step width (approx. mm)	—	520	520
Step depth (approx. mm)	80	300	300
Including	hooks on both sides	double-sided guardrail	double-sided guardrail
Order no.	20001135	20001137	20001136

## Your comfort platform

Optional accessories to make work easier - everything your platform needs.



### Storage tray (narrow/wide)

Practical and convenient: The storage trays let you keep tools and small parts within reach. For attaching to the handrail on a guardrail.

<b>Dimensions</b>		
width x depth x height (approx. mm)	500 x 100 x 85	500 x 200 x 85
<b>Maximum load capacity</b> (approx. kg)	10	10
<b>Order no.</b>	20000582	20000583



### Forklift bracket set

For securely lifting the platform with a forklift. The forklift brackets are mounted directly underneath the platform. Only for modular platform 226001 (height adjustment with locking pins).

<b>Bracket opening</b>	
width x height (approx. mm)	250 x 100
<b>Order no.</b>	20001132



### Crank jack set (2 pieces)

Each set contains two crank jacks, including mounting hardware. The crank jacks are fitted to the cross-beams on the platform's short sides. For improving stability and compensating for uneven ground.

<b>Widens the chassis by</b> (approx. mm)	255
<b>Order no.</b>	20001134



### Add-on guardrail

Depending on the conditions on site, the add-on guardrail can be installed to further enhance safety and comfort. Four guardrail mounts with clamping lever ensure the guardrail is firmly secured.

<b>Guardrail bracket</b> (clamping lever)	4
<b>Length</b> (approx. mm)	3,000
<b>Order no.</b>	20001294



### Lifting eye set (4 pieces)

For securely lifting the platform with straps and overhead cranes as well as for moving it indoors with a crane (if the situation allows). The four lifting eyes are mounted directly on the frame of the platform – a convenient alternative to forklift brackets. Recommended for modular platform 226001 (height adjustment with locking pins).

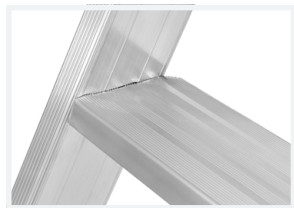
<b>Eye diameter</b> (approx. mm)	50
<b>Order no.</b>	20001133

# STEP-COMBINATION LADDER, THREE-SECTION

- Multifunctional use.
- The upper section is equipped with steps of 80 mm stepping surface. The lower and middle section is equipped with highly moulded extruded profile.
- Convenient extension of the ladder using wall rollers.
- High-strength perlon straps provide reliable safety strut.
- Detachable, rigid braces prevent accidental folding.
- More ground clearance and stability thanks to the arched cross-beam.

## Features:

- Ladder inner width 300 mm (top section).
- Solid steel fittings.
- Riveted ladder feet.
- According to EN 131.



Number of rungs/steps	3×6	3×7	3×8	3×9	3×10
Stile top/middle/bottom (approx. mm)	83/66/66	83/66/66	83/83/83	83/83/83	83/83/83
Number of rungs/steps at max. extension	14	17	20	23	25
Length retracted (approx. m)	1.83	2.11	2.44	2.72	3.00
Length leaning ladder extended (approx. m)	4.07	4.91	5.80	6.64	7.20
Standing height freestanding ladder with extension (approx. m)	1.58	2.08	2.60	3.12	3.63
Reach height freestanding ladder with extension (approx. m)	3.58	4.08	4.60	5.12	5.63
Standing height leaning ladder (approx. m)	2.89	3.67	4.45	5.23	5.75
Reach height leaning ladder (approx. m)	4.89	5.67	6.45	7.23	7.75
Vertical height freestanding ladder with extension (approx. m)	2.76	3.28	3.83	4.35	4.86
Width extended top/middle/bottom (approx. mm)	355/425/1,030	355/425/1,030	355/425/1,160	355/425/1,160	355/425/1,160
Base width (approx. m)	1.43	1.63	1.90	2.11	2.33
Weight (approx. kg)	14.8	16.6	21.2	22.6	26.3
Wall rollers	-	-	✓	✓	✓
Order no.	684718	684721	684724	684727	684730

# STEP LADDER WITH RETAINING BRACKET

- Ergonomic working on 80 mm step depth.  
Front step edges flush with stile.
- Torsion-resistant, cast aluminium hinges.
- High-strength perlon straps provide reliable safety strut.
- Maximum work safety thanks to retaining bracket.

## Features:

- **Screw-in ladder feet.**
- **According to EN 131.**



807408

Number of steps	2×3	2×4	2×5	2×6	2×7	2×8	2×10	2×12
Stile (approx. mm)	71	71	71	71	71	71	71	71
Length (approx. m)	0.77	1.04	1.30	1.53	1.80	2.05	2.54	3.04
Standing height (approx. m)	0.22	0.45	0.69	0.92	1.15	1.38	1.85	2.31
Reach height (approx. m)	2.22	2.45	2.69	2.92	3.15	3.38	3.85	4.31
Width top/bottom (approx. mm)	355/430	355/450	355/475	355/500	355/525	355/550	355/600	355/650
Base width (approx. m)	0.80	0.98	1.15	1.30	1.50	1.70	2.15	2.50
Weight (approx. kg)	5.4	6.4	7.6	9.0	10.2	11.3	14.6	17.3
Order no.	807406	807408	807410	807412	807414	807416	807420	807424

# MACHINE STEP

- Comfortable and safe standing for longer periods of work thanks to the large platform.
- Non-slip, convenient ascent thanks to the large step.
- Extremely high stability for heavy-duty use.
- Lightweight for ergonomic positioning.
- Optionally movable using castors.

## Features:

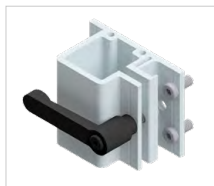
- **Permissible load 150 kg.**
- **According to EN 14183.**



6878363

Number of steps incl. platform	1	2	3	4	5
Standing height (approx. m)	0.20	0.40	0.60	0.80	1.00
Reach height (approx. m)	2.20	2.40	2.60	2.80	3.00
Platform WxD (approx. m)	0.58x0.35	0.58x0.35	0.58x0.35	0.58x0.35	0.58x0.35
Overhang (approx. m)	0.38	0.63	0.87	1.10	1.34
Width (approx. m)	0.60	0.68	0.70	0.73	0.76
Weight (approx. kg)	2.8	5.6	8.2	10.8	14.6
Order no.	6878163	6878263	6878363	6878463	6878563

## ACCESSORIES



### Guardrail bracket with clamping lever

- For quick removal of the guardrail.
- Mounting material included.

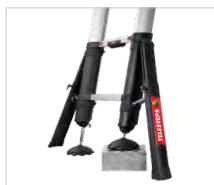
For type	2210+2211+2220+2221 +2230+2231+2240+2241+6884	
Quantity	2 pieces	3 pieces
Order no.	22990036	22990037



### Wall bracket set for ladders

- For secure hooking of ladders.
- Lockable by customer.
- Permissible load per holder = 25 kg (per set = 50 kg).
- Content: 2 wall brackets.

Inside dim. D×H (approx. mm)	250×300
Material	hot-dip galvanized steel
Weight (approx. kg)	3.6
Order no.	004178



### Safety feet, height adjustable for telescopic leaning ladder

- Approved for 150 kg according to EN 131.
- Max. adjustable up to 220 mm.
- Self assembly by using tools.
- Incl. extension kit for the folding stabiliser.

For type	8014
Weight (approx. kg)	2.5
Order no.	0055529

Available from August 2023



# ACCESSORIES



**Holding device lateral for machine step**

- For safe and easy to climb.
- Self assembly by using tools.
- Including fastening material.

For type	6878		
For number of steps	2+3	4	5
Height (approx. m)	0.60	0.60	0.60
Weight (approx. kg)	1.7	1.9	2.0
Order no.	20000962	20000963	20000964



**Holding device frontal for machine step**

- For safe standing.
- Self assembly by using tools.
- Including fastening material.

For type	6878		
For number of steps	2–5		
Height (approx. m)	0.60		
Weight (approx. kg)	1.9		
Order no.	20000965		



**Castors set for machine step**

- Self assembly by using tools.
- Content: 2 castors and 2 holders incl. fastening material.

For type	6878		
For number of steps	2–5		
Weight (approx. kg)	1.1		
Order no.	20000966		

# **Hymer-Leichtmetallbau GmbH & Co. KG**

Käferhofen 10 | 88239 Wangen | Germany

Telephone +49 75 22 700-700

[international-sales@hymer-alu.de](mailto:international-sales@hymer-alu.de) | [hymer-access.com](http://hymer-access.com)